

ALWAYS HOT CONTINUOUS FLOW 32L/MIN NON-CONDENSING ACCESSORIES



CONTROLLERS



MAIN CONTROLLER
CM1D (15m Cable included)



BATHROOM CONTROLLER
CB1D (15m Cable included)

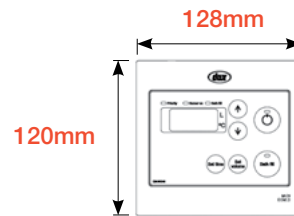


BATHROOM 2 CONTROLLER
CB2D (15m Cable included)

Advanced controllers allowing you to select the hot water temperature you prefer – it's a convenient addition as well as being a welcome safety feature for families.

PRODUCT BENEFITS:

- Convenient 'Bath Fill' function
- Auto-stop water outlet volume (40L-650L)
- Convenient – select the temperature of your hot water.



CONTROLLER ACCESSORIES: STANDARD INSTALLATION

Not connected to recirculation or with a quick connect cable

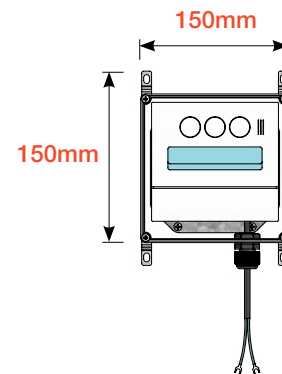
| | |
|---|------|
| Residential Main Temperature Controller | CM1D |
| Bathroom 1 Temperature Controller | CB1D |
| Bathroom 2 Temperature Controller | CB2D |

Note: Refer to Installation Manual on which combination of controllers work together.



REMOTE CONTROLLER
CF-KRC-9018C

When connecting to a recirculation system, or when connecting two units via a quick connect cable, a commercial remote controller is required.



CONTROLLER ACCESSORIES:

When connecting to recirculation, or using a quick connect cable

| | |
|--|--------------|
| Remote Controller | CF-KRC-9018C |
| Quick Connect Cord (2M) - Must be used in conjunction with CF-KRC-9018C | CF-0706377 |

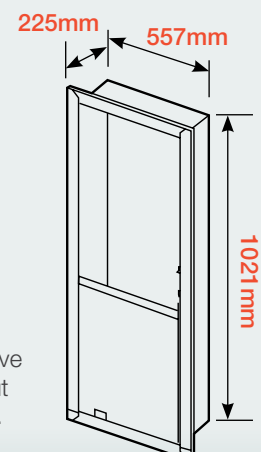
RECESS BOX



PRODUCT BENEFITS:

- Allows water heater to be installed recessed into the wall.
- Can be used with the Dux Always Hot continuous flow 32L/min models only
- Spacer bracket included. Only required for semi-recessed (on studs) installations.

RBM5



Note:
Dimensions above show the cut-out dimensions only.

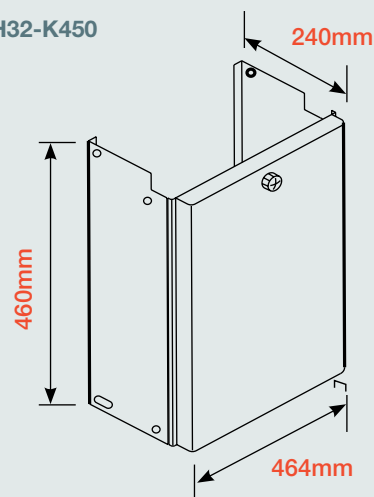
PIPE COVER



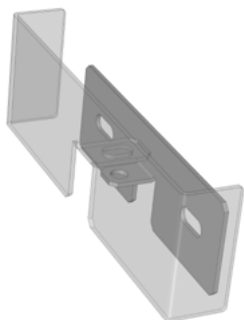
PRODUCT BENEFITS:

- Pipe covers conceal pipes and valves for a nice, tidy finish on the water heater.
- Pipe covers are supplied in the same colour as the continuous flow water heater.
- Can be used with the Dux Always Hot continuous flow 32L/min models only.

CF-H32-K450



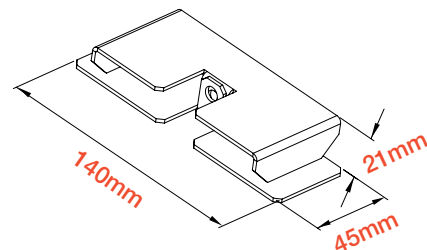
ANTI THEFT BRACKET



PRODUCT BENEFITS:

- Secures your Dux Always Hot Water heater from theft.
- A bracket fits over the water heaters pipes, preventing the unit from being removed from the wall without irreparable damage. Requires a Padlock (not included).

H1210



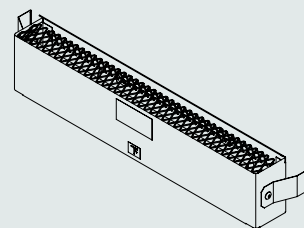
FLUE DIVERTERS



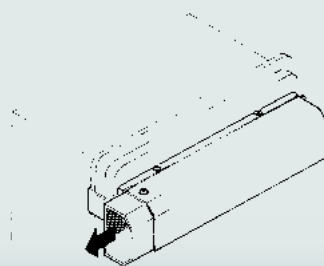
PRODUCT BENEFITS:

- Manufactured from durable stainless steel.
- Designed to divert exhaust in a sideways direction away from windows, doors, fences, trees or other structures. Does not reduce clearances to obstructions as per AS5601.
- Allows the water heater to operate efficiently ensuring the exhaust is not being obstructed.

CFC28
Upward



CF-L7
Horizontal



WARRANTY *Full warranty terms and conditions are in the product's Owners Manual. Visit www.dux.com.au/warranty-terms for full details and conditions which apply.

Sales: **1300 365 116** Service: **1300 365 115** or visit **dux.com.au** for more.

© Dux Manufacturing Limited ABN 19 077 879 844. Lackey Rd, PO Box 209 Moss Vale, NSW 2577. The information supplied was correct at time of printing. Specification and materials may change without notice. © and ™ Trademarks of Dux Manufacturing Limited.